

Playgroup News



A very warm welcome to the new children that have started with us this term. We would also like to welcome Sarah Whitty our new Deputy playgroup leader. Sarah is a very experienced practitioner who has just completed her BA (Hons) in Education studies and we are lucky to have her on board! Mrs Hunt has stepped down from her role as deputy but fortunately for us and her key children she is staying on with St John's as a playgroup assistant. We also sadly say goodbye to Mrs Marsh who helped us out at short notice at Christmas and ended up staying 1 1/2 terms! We wish her well in her move to Tring,

Our Outside area We hope you like the new additions to our outside learning environment. We have added a sensory garden, digging area, a vegetable plot, a nature area, an outside story time/quiet area and cemented in our tyres to create a climbing and crawling area. Unfortunately the funding we have been allocated is still not with us but we hope to further improve the outside area in the summer providing a canopied area and a safety rubberised surfacing as soon as the money arrives. Please ensure your child brings a coat/sunhat everyday to enable them to make the most of our outside area.

Fees and Funding

Please return your funding declaration forms asap to Mrs Murphy. We must have these forms returned for your child to qualify for the 15 hours funded provision for 3/4 year olds & children on the 2 year old support scheme. Thank you

The Early Years Foundation Stage

This month the children have been making the most of our nature area outside where the children can be "nature detectives" exploring mini-beasts and plant life. The children have been walking around the school ground's and woods, taking pictures, exploring and drawing creating nature journals which will be coming home soon. After the half term we will be continuing the theme of mini-beasts and nature with the arrival of our caterpillars which we will look after until they turn into butterflies. In June we will be linking the Carnival theme (see over) into our planning in June helping the children to be creative and imaginative engaging in role play related to fairytales. This is the creative development aspect of the EYFS.



Afternoon sessions

Just a reminder that we are now offering afternoon sessions on Tuesdays and Thursdays 12.15 to 3.15pm. These sessions are a great opportunity for children to benefit from the higher adult to child ratio and smaller group session. Eligible children may attend these sessions as part of their funded 15 hours. Alternatively the fees are £10.20 per session. The sessions are also planned so children can stay all day, being offered a variety of learning experiences throughout the day



Child collection

We take the matter of

your child's safety very seriously at St John's. For this reason we are introducing a password system to make the collection procedure of your child safer. On your child's registration form you have nominated 3 people who are authorized to collect your child. It is our policy that unless we have been informed by yourselves and the collection book has been signed we will not allow your child to go home with anyone else. Although this system appears robust we would like to increase our security for your children by asking you to supply a password to us that we will request from any person collecting your child who is not familiar to us. If you have not yet supplied us with a password please could you place the password in a sealed envelope and giving it to Mrs Murphy or Mrs Whitty



Lunch Boxes

For those who attend lunch club we would like to draw your attention to the fact that we do not have large enough Fridge facilities to accommodate the lunch boxes. For this reason we recommend that you place an ice block in your child's lunch box especially as the weather gets warmer. If you are unable to do this we would recommend that you avoid cold meats in your child's lunch. May we also draw your attention to our policy that no nuts must be brought into the setting



Banardo's Big Toddle

Those of you who were with us last

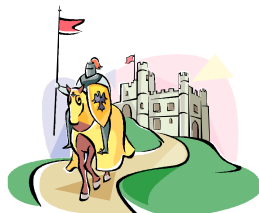
year at Sunny bank may remember taking part in the Banardo's Big toddle. Last year was very successful raising over £350 for Banardo's. This year we would like to repeat the toddle around the school grounds. It will be held on Thurs 2nd July. All children are invited to attend on this day. Parents and carers are invited to take part in the big toddle and join us for a picnic afterwards in our outside play area.



Carnival

Yes it's that time of year

again. We enter a walking float in Potters Bar Carnival every year. We have won first prize for the last 3 years running thanks to the hard work of parents and staff in preparing creative innovative costumes. This year our theme is "once upon a time" focusing on fairytales and castles.



Ideas for costumes include knights, queens, kings, maidens, jesters, princes, princess's dragons, horses, and villagers. We will be making resources with the children over the next few weeks that the children are welcome to use on the day. These include, flags, crowns, maidens cone hats, tabards, shields. The date of the



carnival is Sunday 14th June. The exact intinary will follow but we normally meet at Mount Grace school at approximately 12.30 pm, judging is at 12.45pm

Tesco's and Sainsbury's vouchers

Please keep collecting your vouchers and thank you for all you have collected so far



Dates for your Diary

SUMMER TERM

Monday 25th - Friday 29th May Half term, *playgroup closed*
Sunday 14th June *Potters Bar carnival,*
Thursday 2nd July 2009 Banardo's Big Toddle. More details to follow.
17th July 2009 Leavers/Summer Beach Party *LAST DAY of TERM*